

2019 PRODUCT GUIDE

Contents

- 4 Our Story
- 10 Our Process
- 13 Our Philosophy
- 17 SIGNATURE LINE**
- 18 Cleansers**
- 19 Aloe Herb Cleanser
- 22 Citrus Mint Cleanser
- 25 Overview of Cleansers
- 26 Toning Mists**
- 27 Neroli Toning Mist
- 30 Rosemary Toning Mist
- 33 Overview of Toners
- 34 Serums**
- 35 Anti-Aging Serum
- 38 Citrus Stem Cell Serum
- 41 Probiotic Serum with Tremella
- 44 Overview of Serums
- 46 Facial Oils**
- 47 Anti-Aging Facial Oil
- 50 Herbal Facial Oil for Normal & Combination Skin
- 53 Herbal Facial Oil for Oily Skin
- 56 Herbal Facial Oil for Sensitive Skin
- 59 Overview of Facial Oils
- 60 Eye Cream**
- 61 Anti-Aging Eye Cream
- 64 Overview of Eye Cream
- 65 Exfoliants & Masks**
- 66 Ayurvedic Facial Scrub
- 69 Kaolin Micro Exfoliant
- 72 Coconut Honey Mask
- 75 Illuminating Pearl Mask
- 78 Purifying Mud Mask
- 81 Overview of Exfoliants & Masks
- 82 Sun Protection**
- 83 Sun Love
- 85 Overview of Sun Protection
- 86 Body Care**
- 87 Rosemary Peppermint Body Wash
- 90 Coconut Body Oil

CONTENTS **CONT.**

- 93 Radiant Skin Silk
- 96 Overview of Body Care

97 Lip Care

- 98 Antioxidant Lip Balm
- 101 Overview of Lip Balm

**102 WILD ALCHEMY
COLLECTION**

103 Cleansers

- 104 Phytonutrient Cleanser

107 Toning Mists

- 108 Botanical Hydration Mist
with Immortelle

111 Serums

- 112 Wild Fruit Serum

115 Body Care

- 116 Palo Santo Body Butter

- 119 Overview of
Wild Alchemy Collection

**120 MINERALS BY
ANNMARIE**

121 Foundation

- 122 Multi-Purpose Foundation

126 ESSENTIAL OILS

127 Blends

- 128 Love
- 130 Passionate
- 132 Vibrance
- 134 Calm
- 136 Grounded

138 Product Guide

A photograph of an orange tree with several ripe oranges hanging from the branches. The background is slightly blurred, showing more of the tree and some white flowers. The overall tone is natural and fresh.

OUR STORY



Kevin + Annmarie
2008

‘While interviewing
healthcare experts, their
viewers were posting a
question of their own:
“Annmarie, what
products do you use for
your skin?”’

“That wasn’t what Annmarie and Kevin wanted either. Their products would have to be free of toxic chemicals.”

In 2008, healthy living bloggers Annmarie and Kevin Gianni powered up a vegetable oil-powered RV and embarked on a 2½-year journey across North and South America. Their goal: to track down the best natural-care products and protocols to share with viewers of their popular YouTube videocast, *The Renegade Health Show*. While Annmarie and Kevin were posting interviews with healthcare experts, manufacturers, growers, and healers, their viewers were posting a question of their own: “Annmarie, what products do you use for your skin?”

They combed through their cupboards examining labels and were horrified to discover that nothing Annmarie was using met their own high standards. So shortly after their trip began, they set out to find a product line they could recommend.

They talked with skin care company owners but weren’t always impressed

with their ingredients or results. They then spoke with formulators about developing their own skin care line but were dismayed by how many said the way to make products cleaner and greener was just to not list any toxic ingredients on the label if they were present in amounts too small to be covered by federal labeling regulations. That wasn’t what Annmarie and Kevin wanted either. Their products would have to be free of toxic chemicals.

They had just about given up the quest when Annmarie walked into a small spa in Patagonia, Arizona. The esthetician there introduced her to a line of skin care unlike anything Annmarie had ever known. The products felt so different—alive, with a palpable energetic vibration—and the scent was like nothing she had experienced before. When Annmarie applied the face oil, she saw immediate results. After more than six months of searching, here at last was a product line they could recommend.

“...to ensure high quality products that will deliver results customers can count on—now and into the future.”

Annmarie contacted Bunnie, the owner of the skin care line. An herbalist and a chemist, Bunnie has been formulating organic skin care products for over 30 years, using herbs and extracts straight from nature—in their finest and purest form. Unfortunately, her products are sold only in spas. But after finding a line so closely aligned with their values, Annmarie and Kevin couldn't just let it go. Back they went to Bunnie, to see if she would help them bring a natural skin care line to the wider public. Happily, she agreed.

In 2009, Annmarie Skin Care was launched. Each product is made with intention, using our 3-step, *Wild. Beautiful.* proprietary process. All ingredients are hand-selected, then infused in base oils and aloe juice, and then crafted using additional plant extracts and ingredients to make them as effective as possible. The result is beautiful, glowing skin.

Today, Annmarie and Kevin spread the message about good, clean, effective skin care through consumer education and a natural, organic, wildcrafted product line that speaks for itself. Together with COO Rachel Pachivas, they've put together a team that is dedicated to helping people make better decisions about their skin, beauty, and overall health. The team's research into industry practices has uncovered hidden processes in ingredient production, chemical derivatives in so-called natural ingredients, and other shortcuts and oversights. These investigations have helped Annmarie Skin Care create processes to ensure high quality products that will deliver results customers can count on—now and into the future.



Rachel, Bunnie, + Kevin
2016

“Together with
COO Rachel Pachivas,
they’ve put together
a team that is dedicated
to helping people
make better decisions
about their skin, beauty,
and overall health.”

HONESTY.

Everything that is in our products is on the label. We only source our ingredients with integrity. We always have workers, wages, the environment and outstanding quality on our minds.

WILD.

Our products are as close to nature as you can get. We use the best organic and wildcrafted ingredients mother nature can provide, giving you a pure experience—free of synthetic chemicals, colors and fragrances.

BEAUTIFUL.

This is our promise to you. Use these products and see the results—beautiful, youthful, glowing skin.



A close-up photograph of three green avocados hanging from a branch. The avocados are in various stages of ripeness, with some showing a more vibrant green and others a slightly darker, more textured green. The background is a soft, out-of-focus green, suggesting a natural setting. The text "OUR PROCESS" is overlaid in the center in a white, serif font.

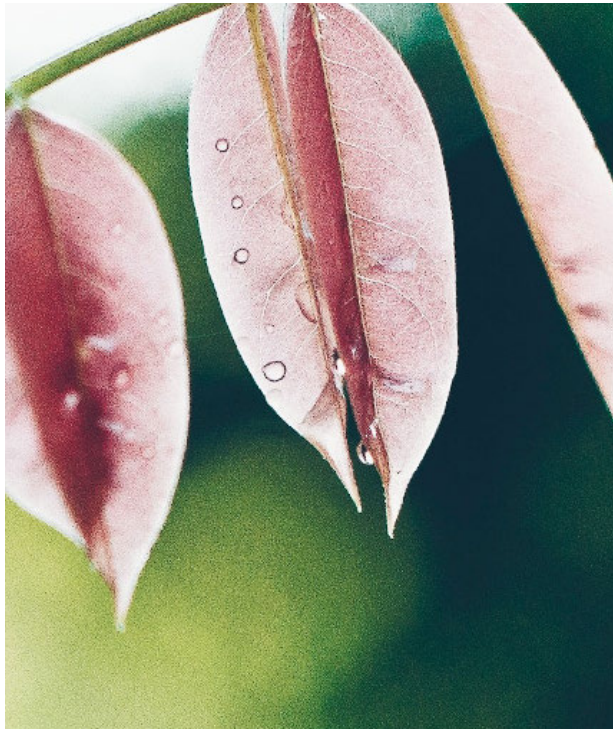
OUR PROCESS

What Makes Us Different

We handcraft skin care, using organic and wildcrafted ingredients, that promises beautiful, glowing skin.

We do this using our 3-step, proprietary *Wild. Beautiful.* process.





STEP 1: SELECT

We carefully select organic and wildcrafted ingredients—including herbs and plant extracts—to meet the highest standards of quality and effectiveness for your skin and body. We carefully audit our sources to ensure that they continue to meet our standards.



STEP 2: INFUSE

We then infuse selected herbs into aloe vera and into skin nutritive oils for up to 30 days at low heat (never over 95°). These infusions are used as a potent base for all our products.



STEP 3: CRAFT

We then add additional, selected natural plant extracts, skin supporting nutrients and aromatherapy to make the most active and effective natural products available. Additionally, we package these products with intention using Miron glass and sustainable materials.



OUR PHILOSOPHY



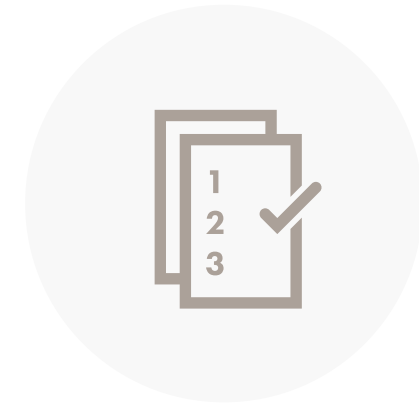
OUR SOURCING

Annamarie Skin Care sources only organic, natural, and wildcrafted ingredients. We never use synthetic chemicals or GMO plants. At times we do not use certified organic ingredients because the source we use is either wildcrafted or grown organically without certification. Quality and integrity guide all our sourcing choices.



OUR METHOD

We produce handmade micro-batches in the Colorado Mountains. Our herbs are infused into aloe vera, and into cold-pressed carrier oils for several weeks, never heated above 95°F/35°C degrees, and carefully attended to. This temperature is high enough to extract the active and beneficial plant properties, but low enough to not compromise the nutrient value. Each batch and bottle is handled with love and attention, creating beautiful, effective and truly natural skin care.



OUR FORMULAS

Years of study allow us to produce the freshest, most active skin nourishing natural formulas possible. Living, plant-based skin healthy nutrients deliver vitamins, minerals, antioxidants and enzymes to help bring balance, and beauty. We meticulously research every ingredient, ensuring the strongest and most effective skin care possible.



OUR PACKAGING

To preserve the integrity of our handmade skin care, all products are packaged in recyclable miron glass. This dark violet glass blocks the complete spectrum of visible light—with the exception of violet, ultraviolet and infrared light—to prevent the contents inside from degrading—offering protection for longer periods of time. The result: Longer lasting natural freshness that doesn't require synthetic preservatives. Additionally, our product boxes are made at a 100% wind powered facility using 80% post consumer waste and 20% recycled materials. Our box inserts are made with 30% post-consumer waste and marketing materials are made with 100% post-consumer waste. Lastly, our labels are made with 100% sugarcane plant fiber waste with chemical-free adhesive.





OUR LABELING

We pledge 100% honesty and transparency. What's in our product is on the label—and we take this very seriously. We feel that everyone has the right to know exactly what they are putting on their skin, a choice that affects their health and the health of the planet.



OUR BUSINESS PHILOSOPHY

Our customers, our suppliers, and our employees are part of our family. We are committed to creating genuine and sustainable relationships with everyone we work with and serve. Conscious business practices are all around us and we actively support other companies that share our ideals. We happily list and highlight them in our monthly “We Heart” column.

We at Annmarie Skin Care are mothers, fathers, sons and daughters, just like you—so in addition to creating the best natural skin care possible, we are committed to creating a better, more sustainable—and in turn, more beautiful world.

SIGNATURE LINE





CLEANSERS

Aloe Herb Cleanser

Herb-Infused Facial Cream Cleanser

Cleanse and lift excess oil with this pH-balanced, aloe vera-based cream cleanser. Infused with healing herbs and a light blend of natural oils containing essential fatty acids, to keep your skin naturally hydrated. Gently removes makeup and impurities without drying or leaving any residue. Leaves your skin feeling nourished, soft and beautiful.



Available in both **50 ML** and **100 ML** sizes.

50 ML Lasts approximately 2 months, with daily use.

100 ML Lasts approximately 4 months, with daily use.

EXPIRES 2 YEARS AFTER FORMULATION

Product Details

SUITABLE FOR

All Skin Types

FOR BEST RESULTS

Use AM/PM. Apply to damp skin, massage into face, rinse.
For deeper exfoliation. Use with Bamboo Face Brush.

KEY INGREDIENTS

Aloe Vera

Coconut Oil

Calendula

Lemon Essential Oil

ALOE HERB CLEANSER

FULL INGREDIENT LIST

*Aloe vera juice, *coconut oil, saponified oils (coconut oil and plant starches/sugars), *aloe vera juice infused with herbs (*calendula flowers, *hyssop leaves, *lavender flowers, *lemon balm, *life everlasting flowers, *neem leaves, *olive leaves), *vegetable glycerin, aspen bark extract, essential oils of ruby grapefruit, lemon, and green mandarin, non-GMO xanthan gum, *rosemary extract.

**Organically grown or wildcrafted*

ALOE HERB CLEANSER

Citrus Mint Cleanser

Herb-Infused Facial Gel Cleanser

Gently lift excess oil with this pH-balanced, aloe vera-based gel cleanser. Removes makeup and impurities without harsh chemicals or leaving any residue. Witch hazel cleanses without stripping the acid mantle, the skin's protective barrier. Hand selected herbs and oils keep your pores clear and skin refreshed.



Available in both **50 ML** and **100 ML** sizes.

50 ML Lasts approximately 2 months, with daily use.

100 ML Lasts approximately 4 months, with daily use.

EXPIRES 2 YEARS AFTER FORMULATION

Product Details

SUITABLE FOR

Oily and Combination Skin

FOR BEST RESULTS

Use AM/PM. Apply to damp skin, massage into face, rinse. For deeper exfoliation. Use with Bamboo Face Brush.

KEY INGREDIENTS

Lemon Balm

Rosemary

Witch Hazel Distillate

Neem



CITRUS MINT CLEANSER

FULL INGREDIENT LIST

*Aloe vera juice, saponified oils (coconut oil and plant starches/sugars), *aloe vera juice infused with herbs (*calendula flowers, *comfrey leaves, *life everlasting flowers, *lavender flowers, *lemon balm leaves, *neem leaves, *plantago leaves, *rosemary leaves, *olive leaves), *vegetable glycerin, aspen bark extract, *witch hazel distillate, essential oils of lemon, rosemary, lemon myrtle and peppermint, non-GMO xanthan gum, *rosemary extract. **Organically grown or wildcrafted*



CITRUS MINT CLEANSER

Overview of Cleansers

Cleansing is the first and most important step in a facial regimen. This process lifts away impurities and environmental pollutants, creating a clean canvas and prepping skin for all of the steps to follow. Without proper cleansing of the skin, the active ingredients in toners, serums, and moisturizers cannot be absorbed effectively by the skin and perform optimally.

Healthy skin begins with a skin-balancing cleanser, ideally one with low foaming or no foaming properties. All Annmarie cleansers have an average pH of 5.5-5.6, fairly close to the natural pH of the skin. The importance of pH balanced cleansers is to ensure that the skin does not dry out and is protected from loss of hydration.

Not all cleansers are created equally. A common characteristic of a cleanser that is more alkaline, like bar soaps or cleansers with sulfates and other harsh surfactants, is HIGH foam. High alkalinity

compromises the skin's natural acid mantle (its protective barrier), which can leave the skin feeling dry, tight and more prone to skin sensitivities and even premature aging.

What is Sodium Lauryl Glucose Carboxylate?

We use Sodium Lauryl Glucose Carboxylate (Plantapon® LGC Sorb), a completely natural sugar-based surfactant, in our cleansers. SLGC is the INCI name for saponified oils (coconut oil and plant starches/sugars). This surfactant is ideal for use in facial cleansers and hair care products, due to its gentle cleansing, low-foaming properties. There have been no studies found that report any negative side effects regarding the use of Sodium Lauryl Glucose Carboxylate and it has been approved for use in certified organic cosmetics by both Organic Food Federation and Ecocert.

What is a surfactant?

A surfactant is an emulsifier, the ingredient that makes a cleanser “foam.”



TONING MISTS

Neroli Toning Mist

Uplifting Face & Body Mist

This delicate aloe vera infusion hydrates, softens and balances your look, and enhances absorption of all serums and oils. The sweet, orange-blossom aroma of neroli oil calms and soothes the mind. Use throughout the day to instantly feel hydrated and refreshed.



50 ML Lasts approximately 3 months, with daily use.

EXPIRES 1.5 YEARS AFTER FORMULATION

Product Details

SUITABLE FOR

All Skin Types

FOR BEST RESULTS

Use AM/PM. After cleansing, lightly mist over face and neck. Let dry. Follow with the serum and/or moisturizer best suited to your skin type. Spritz throughout the day for a refreshing pick-me-up.

KEY INGREDIENTS

Aloe Vera

Aspen Bark Extract

Neroli Essential Oil

A close-up photograph of several white Neroli flowers (Citrus aurantium) in bloom. The flowers have five petals and a prominent yellow center with stamens. They are set against a dark, blurred background of green leaves and branches. The lighting is soft, highlighting the delicate texture of the petals.

NEROLI TONING MIST

FULL INGREDIENT LIST

*Aloe vera juice, aspen bark extract, neroli essential oil.

**Organically grown or wildcrafted*

NEROLI TONING MIST

Rosemary Toning Mist

Energizing Face, Body & Hair Mist

Invigorate skin with this refreshing rosemary toner. Replenishes skin. Spritzed on hair near the roots, the mist revives and refreshes with rosemary's stimulating properties.



50 ML Lasts approximately 3 months, with daily use.

EXPIRES 1.5 YEARS AFTER FORMULATION

Product Details

SUITABLE FOR

All Skin Types, Including Oily Skin

FOR BEST RESULTS

Use AM/PM. After cleansing, lightly mist over face and neck. Let dry. Follow with the serum and/or moisturizer best suited to your skin type.

KEY INGREDIENTS

Rosemary Distillate

Aloe Vera

Thyme

Neem

White Willow Bark



ROSEMARY TONING MIST

FULL INGREDIENT LIST

*Rosemary verbenone distillate, *aloe vera juice infused with herbs (*white willow bark, *thyme, *neem), aspen bark extract, sodium ascorbate. **Organically grown or wildcrafted*



ROSEMARY TONING MIST

Overview of Toning Mists

Tip:

Our toners can be used as a base for the Purifying Mud Mask to enhance the formula. We also recommend to spritz our toning mists after applying facial oil to help drive the oils deeper into the skin, increasing absorption.

Traditionally, toners were created to help restore the skin's pH after cleansing.

Some toners are designed to be spritzed on the face (like Annmarie toning mists), while others are meant to be poured onto a cotton ball or pad and gently swiped across the face to remove excess oil, dirt and grime.

To help maintain a healthy and radiant complexion, toners should have a gentle effect on the skin and contain soothing botanicals that nourish and hydrate. Toners formulated with high concentrations of alcohol targeted to control oil or blemish-prone skin should be avoided, as these can lead to dryness, discomfort and premature signs of aging.

Annmarie toning mists are formulated to:

- Enhance the absorption of other ingredients they're combined with

- Minimize the appearance of large pores
- Effectively hydrate the skin
- Set the stage for optimal moisturization
- Tone and tighten the skin
- Provide the skin with proper nutrition

Our toning mists are in a base of certified organic aloe vera which is derived from the aloe vera leaf, including the inner leaf processes of the plant.

The aloe is then freeze dried to retain all of the essential vitamins, minerals, phytonutrients and enzymes.



SERUMS

Anti-Aging Serum

Hydrating Facial Serum

This versatile, aloe vera-based serum provides active nutrients for all skin types, firming and tightening the appearance of aging skin. Hyaluronic acid hydrates, while the herbal extracts buddleja davidii and edelweiss protect skin from environmental stressors. Life everlasting flowers soothe and refresh.



15 ML Lasts approximately 30-45 days, with daily use.

EXPIRES 1.5 YEARS AFTER FORMULATION

Product Details

SUITABLE FOR

All Skin Types, Including Sensitive Skin

FOR BEST RESULTS

Apply to clean skin. Pump a generous amount into palm of hand. Dab a bit on nose, chin, cheeks and forehead. Blend well. Best used before your preferred facial moisturizer.

KEY INGREDIENTS

Rose Distillate

Life Everlasting Flowers

Buddleja Extract

Hyaluronic Acid



ANTI-AGING SERUM

FULL INGREDIENT LIST

*Aloe vera juice, serum blend (*aloe vera juice, *squalane [plant sugar derived], carrageenan [chondrus crispus], non-GMO xanthan gum), *rose distillate, *aloe vera juice infused with herbs (*amla berry, *calendula flowers, *comfrey leaves, *fennel seed, *gingko leaves, *gotu kola leaves, *shavegrass (horsetail herb), *life everlasting flowers, *milk thistle seed, *nettle leaves, *plantago leaves, *rhodiola root, *rooibos, *rosemary leaves, *schisandra berries), *sunflower seed extract, *buddleja davidii extract, *edelweiss extract, aspen bark extract, *vegetable glycerin, *red raspberry seed extract, sodium ascorbate, *flax seed extract, *chia seed oil, *tamanu oil, non-GMO vitamin E tocopherols, non-GMO xanthan gum, hyaluronic acid, CO₂ extracts of *rosemary and rosehip seed, essential oils of vetiver, frankincense, sweet myrrh, *rose absolute and *jasmine sambac absolute. **Organically grown or wildcrafted*

ANTI-AGING SERUM

Citrus Stem Cell Serum

Energizing Facial Serum

Increase the appearance of firmness and tightness with this special citrus stem cell complex. This serum brightens the look of dull, lackluster skin. Formulated with uva ursi, licorice root and amla berry to deliver youthful, vibrant and radiant looking skin.



15 ML Lasts approximately 30-45 days, with daily use.

EXPIRES 1.5 YEARS AFTER FORMULATION

Product Details

SUITABLE FOR

All Skin Types, Including Dry or Mature Skin

FOR BEST RESULTS

Apply to clean skin. Pump a generous amount into palm of hand. Dab a bit on nose, chin, cheeks and forehead. Blend well. Best used before your preferred facial moisturizer.

KEY INGREDIENTS

Citrus Derived Stem Cells
Uva Ursi Extract
Licorice Root Extract



CITRUS STEM CELL SERUM

FULL INGREDIENT LIST

*Aloe vera juice, serum blend (*aloe vera juice, *squalane [plant sugar derived], carrageenan [chondrus crispus], saccharide isomerate, non-GMO xanthan gum), *jojoba oil, citrus-derived stem cells, skin brightening extract complex (*uva ursi, *licorice root and *amla berry), *castor oil, *life everlasting flower extract, aspen bark extract, *vegetable glycerin, sodium ascorbate, hyaluronic acid, superoxide dismutase, non-GMO xanthan gum, CO₂ extracts of sea buckthorn berry, rosehip seed, rosehip and *rosemary, essential oils of *lavender and sandalwood. **Organically grown or wildcrafted*



CITRUS STEM CELL SERUM

Probiotic Serum with Tremella

Bio Facial Elixir

Support your skin's natural defenses with this concentrated blend of skin-reviving probiotics. Olive leaf extract and astaxanthin work to shield skin from harmful elements with superior antioxidant activity. Tremella, an ancient Chinese beautifying mushroom, is nature's alternative to hyaluronic acid, immersing skin with deep hydration. Restorative herbs work together with biome-friendly extracts, to bring skin back to a state of balance.



15 ML Lasts approximately 30-45 days, with daily use.

EXPIRES 1.5 YEARS AFTER FORMULATION

Product Details

SUITABLE FOR

All Skin Types, Including Sensitive Skin

FOR BEST RESULTS

Apply to clean skin. Pump a generous amount into palm of hand. Dab a bit on nose, chin, cheeks and forehead. Blend well. Best used before your preferred facial moisturizer.

KEY INGREDIENTS

Probiotic Ferment

Tremella Mushroom Extract

Fermented Olive Leaf Extract

Astaxanthin



PROBIOTIC SERUM WITH TREMELLA

FULL INGREDIENT LIST

*Aloe vera juice, probiotic ferment, *squalane, *tremella mushroom extract, plankton extract, fermented olive leaf extract, *aloe vera juice infused with herbs (*nettle leaves, *comfrey leaves, *plantago leaves, *dandelion leaves, *olive leaves), aspen bark extract, *glycerin, *tamanu oil, *avocado oil, superoxide dismutase, camellia leaf extract, essential oils of sacred frankincense and vetiver, carrageenan [chondrus crispus], astaxanthin, *rosemary extract, non-GMO xanthan gum. **Organically grown or wildcrafted*

PROBIOTIC SERUM WITH TREMELLA



Overview of Serums

The purpose of using a serum is to infuse the skin with a potent dose of nutrients. Most serums have a dense infusion of synergistic ingredients that target specific skin concerns like fine lines, wrinkles, dark spots, dehydration and sensitivities. Serums are concentrated products!

A serum is always to be applied after cleansing the skin and before moisturizing. Serums are generally water-based and their main function is to help hydrate and bind moisture to the skin. Think of this step as putting on a layer of hydration. To create a healthy moisture balance in the skin, using a serum in conjunction with the proper moisturizer or facial oil is essential and will enhance your glow with time and consistency.

Serums contain highly effective ingredients like hyaluronic acid, vitamins, peptides, stem cells, plant cells, CO₂

extracts and antioxidants that work together to provide powerful age-defying benefits, giving skin beautiful, long-lasting results.

What is a Serum Blend?

Our serum blend is comprised of aloe vera juice, squalane, carrageenan, saccharide isomerate and non-GMO xanthan gum. Together, these ingredients create the perfect hydrating base and consistency for our serums. Aloe is hydrating and nutrient-rich, squalane is skin-smoothing and moisture-binding, carrageenan is water-binding, saccharide isomerate is emollient and xanthan gum is used to thicken the blend and prevent separation. Our non-GMO xanthan gum is sourced from fermented wood pulp!

What is the Difference Between All Three Signature Serums?

Our Anti-Aging Serum, Citrus Stem Cell Serum and Probiotic Serum with Tremella are all formulated to hydrate the skin

deeply and each have their own unique functions to serve specific skin types.

Anti-Aging Serum

A lightweight, nutritive serum ideal for sensitive, aging skin. This infusion is comprised of soothing, hydrating and antioxidant-rich botanicals formulated to offset early signs of aging and provide topical nutrition to support healthy skin daily. This everyday serum will help to plump up the look of fine lines and wrinkles, while also alleviating temporary redness common in sensitive skin.

Citrus Stem Cell Serum

A targeted serum formulated to increase the look of firmness and tightness in aging skin, enhancing the skin's quality and resilience. This serum is ideal for thicker and more textured skin that has had a lot of exposure to the elements, which is often accompanied by dark spots and an uneven skin tone. The unique brightening complex in this

serum works to effectively reduce the appearance of dark spots, while also addressing the concerns of fine lines, wrinkles and dull, lackluster skin.

Probiotic Serum with Tremella

This serum is formulated for all skin types and is ideal for those with compromised skin. This serum is a great choice for those transitioning from a chemical line to a natural line, helping to restore the skin with healthy flora. Overall, this serum helps to balance the skin's pH, improve skin hydration, enhance skin suppleness and reduce the appearance of temporary redness and other skin burdens.

A still life composition featuring several olives and a glass of oil. The olives are in various stages of ripeness, with some being dark purple and others green. A glass of golden-yellow oil is partially visible on the right side. The background is dark and out of focus, with some green leaves or branches visible on the left. The text "FACIAL OILS" is centered over the image in a white, serif font.

FACIAL OILS

Anti-Aging Facial Oil

Restorative Facial Moisturizer

This luxurious, herb-infused formula delivers intense moisture to keep dry and mature skin supple and dewy.

Antioxidant-rich seed oils—chia, goji berry, and broccoli—firm and tighten, while reducing the appearance of fine lines and wrinkles. Jojoba oil resembles your skin's natural oil, softening and conditioning mature skin. Your skin vibrates in perfect harmony.



Available in both **15 ML** and **30 ML** sizes.

15 ML Lasts approximately 1-2 months, with daily use.

30 ML Lasts approximately 2-4 months, with daily use.

EXPIRES 2.5 YEARS AFTER FORMULATION

Product Details

SUITABLE FOR

Dry or Mature Skin

FOR BEST RESULTS

Use AM/PM or as needed. Apply to clean skin or over serum. Pump 1 to 2 full pumps into palm of hand. Dab on nose, chin, cheeks and forehead. Blend with gentle strokes.

KEY INGREDIENTS

Jojoba Oil

Life Everlasting Flowers

Chia Seed Oil

Goji Berries

Plantago



ANTI-AGING FACIAL OIL

FULL INGREDIENT LIST

*Sunflower seed oil, herb infused oil (*jojoba oil, sesame seed oil, *calendula flowers, *comfrey leaves, *comfrey root, *echinacea purpurea, *gingko leaves, *goji berries, *gotu kola leaves, *hibiscus flowers, *lavender flowers, *lemon balm, *licorice root, *life everlasting flowers, *lotus stamen, *plantago leaves, *rhodiola, *rooibos, *rose petals, *rosemary leaves, *green tea leaves, *shavegrass (horsetail herb), *violet leaves, *acai fruit, *amla, *ashwagandha, *frankincense, *milk thistle seed), *hemp seed oil, *rosehip seed oil, *pumpkin seed oil, red raspberry seed oil, *chia seed oil, *carrot seed oil, *broccoli seed oil, *pomegranate seed oil, cranberry seed oil, *black cumin seed oil, *acai berry oil, *buriti fruit oil, non-GMO vitamin E tocopherols, CO2 extract of sea buckthorn berry, essential oils of sandalwood, vetiver, sweet fennel, frankincense, *jasmine sambac absolute and *Moroccan rose absolute. **Organically grown or wildcrafted*



ANTI-AGING FACIAL OIL

Herbal Facial Oil for Normal & Combination Skin

Balancing Facial Moisturizer

Nourish normal or combination skin with this gentle and calming herbal blend. Our unique grapeseed oil base helps balance natural oils. Skin-enriching oils—tamanu, passion fruit seed, and buriti fruit—enhance the skin’s natural radiance. This lightweight, quickly absorbed moisturizer feels soothing while delivering essential nutrients for healthy skin.



15 ML Lasts approximately 1-2 months, with daily use.

EXPIRES 2.5 YEARS AFTER FORMULATION

Product Details

SUITABLE FOR

All Skin Types, Including Sensitive Skin

FOR BEST RESULTS

Use AM/PM or as needed. Apply to clean skin or over serum. Pump 1 to 2 full pumps into palm of hand. Dab on nose, chin, cheeks and forehead. Blend with gentle strokes.

KEY INGREDIENTS

Grapeseed Oil

Tamanu Oil

Echinacea

Blue Chamomile Essential Oil



HERBAL FACIAL OIL
FOR NORMAL & COMBINATION SKIN

KEY INGREDIENT BENEFITS

Herb infused oil (*grapeseed oil, *calendula flowers, *comfrey leaves, *comfrey root, *echinacea purpurea, *gingko leaves, *goji berries, *gotu kola leaves, *hibiscus flowers, *lavender flowers, *lemon balm, *licorice root, *life everlasting flowers, *lotus stamen, *plantago leaves, *rhodiola, *rooibos, *rose petals, *rosemary leaves, *green tea leaves, *shavegrass (horsetail herb), *violet leaves, *acai fruit, *amla, *ashwagandha, *frankincense, *milk thistle seed), *fractionated coconut oil, *sunflower oil, *olive oil, *aloe vera oil, *passion fruit seed oil, *carrot seed oil, *tamanu oil, non-GMO vitamin E tocopherols, raspberry seed oil, *buriti fruit oil, cranberry seed oil, CO2 extracts of evening primrose, sea buckthorn berry, rosehip, calendula and *rosemary, essential oils of bergamot, blue chamomile, melissa, sandalwood and *jasmine sambac absolute.

**Organically grown or wildcrafted*



HERBAL FACIAL OIL
FOR NORMAL & COMBINATION SKIN

Herbal Facial Oil for Oily Skin

Purifying Facial Moisturizer

Specially formulated with cleansing botanicals, white willow bark and neem, this delicate herbal blend helps unclog pores and balances natural oils. Lightly moisturizing with a fast-absorbing grapeseed oil base. Leaves skin soft and smooth for a bright and beautiful complexion.



15 ML Lasts approximately 1-2 months, with daily use.

EXPIRES 2.5 YEARS AFTER FORMULATION

Product Details

SUITABLE FOR

Oily and Blemish-Prone Skin

FOR BEST RESULTS

Use AM/PM or as needed. Apply to clean skin or over serum. Pump 1 to 2 full pumps into palm of hand. Dab on nose, chin, cheeks and forehead. Blend with gentle strokes.

KEY INGREDIENTS

White Willow Bark

Neem

Black Cumin Seed Oil

Hazelnut Oil



HERBAL FACIAL OIL
FOR OILY SKIN

FULL INGREDIENT LIST

Herb infused oil (*grapeseed oil, *white willow bark, *barberry bark, *basil leaf, *echinacea purpurea, *goji berry, *hibiscus flower, *licorice root, *meadowsweet, *milk thistle seed, *neem leaves, *bitter orange peel, *rosemary leaves, *green tea), *fractionated coconut oil, *hazelnut oil, *passion fruit oil; *black cumin seed oil, essential oils of sandalwood and clementine, *carrot seed oil, red raspberry seed oil, cranberry seed oil, *buriti fruit oil, non-GMO vitamin E tocopherols, CO2 extracts of carrot, rosehip, rosehip seed and *rosemary. **Organically grown or wildcrafted*

HERBAL FACIAL OIL
FOR OILY SKIN

Herbal Facial Oil for Sensitive Skin

Unscented Facial Moisturizer

This calming and soothing formula reduces the appearance of fine lines and wrinkles without irritating sensitive skin. Omega-rich oils—sacha inchi and camellia seed—nourish and revitalize skin. Though formulated for sensitive skin, this oil is moisturizing enough for dry skin as well. No essential oils are added, making it ideal for anyone sensitive to scented products.



15 ML Lasts approximately 1-2 months, with daily use.

EXPIRES 2.5 YEARS AFTER FORMULATION

Product Details

SUITABLE FOR

All Skin Types, Including Sensitive,
Dry and Combination Skin

FOR BEST RESULTS

Use AM/PM or as needed. Apply to clean skin or over serum. Pump 1 to 2 full pumps into palm of hand. Dab on nose, chin, cheeks and forehead. Blend with gentle strokes.

KEY INGREDIENTS

Camellia Seed Oil
Sacha Inchi Oil
Squalane



HERBAL FACIAL OIL
FOR SENSITIVE SKIN

FULL INGREDIENT LIST

*Grapeseed oil, *camellia seed oil, *rosehip seed oil, herb infused oil (*fractionated coconut oil, *lavender flowers, *calendula flowers, *life everlasting flowers), *evening primrose oil, *squalane [plant sugar derived], *perilla oil, *pomegranate seed oil, *sacha inchi oil, cranberry seed oil, CO2 extracts of sea buckthorn berry and *rosemary.

**Organically grown or wildcrafted*



HERBAL FACIAL OIL
FOR SENSITIVE SKIN

Overview of Facial Oils

Our facial oils (like our serums) are formulated using our unique, 3-step *Wild. Beautiful.* process that involves infusing herbs into large vats of carrier oils for up to 4 weeks, never heated above 95 degrees. This infusion method extracts all of the essential plant properties without compromising any nutrient value, resulting in very active facial oils yielding high levels of antioxidants, phytonutrients, vitamins, minerals and essential fatty acids.

The high antioxidant content of our facial oils can potentially cause the skin to become reactive, due to skin detoxification. This can also happen when transitioning from a more conventional line containing synthetic chemicals, to a natural line. The reaction can subside within a few weeks, but if it lasts longer, we recommend switching to our Herbal Facial Oil For Sensitive Skin as an alternative, because the herb infusion is less concentrated and there are no

added essential oils, making it ideal for skin prone to sensitivities.

Oils are the primary base ingredient for all of the Annmarie facial moisturizers because oils are truly superior in delivering proper moisture to the skin. In addition, they are nutrient dense and contain no fillers or waxes. Due to their liquid nature, oils are welcomed by the skin much more easily than creams.

Creams contain emulsifying wax that can create a build up on the surface of the skin leading to clogged pores, while also preventing the beneficial oils within the formula from actually penetrating into the skin. This is why oils on their own absorb with ease and are our preferred method for moisturizing the skin effectively!



EYE CREAM

Anti-Aging Eye Cream

Plant Cell Eye Complex

Eyes look rested and more beautiful with this luxurious eye cream containing soothing herbs and active plant cells. Antioxidant-rich green tea and goji berries reduce the appearance of fine lines and wrinkles, while cucumber extract and the herb eyebright temporarily ease puffiness.



15 ML Lasts approximately 2-3 months, with daily use.

EXPIRES 2 YEARS AFTER FORMULATION

Product Details

SUITABLE FOR

All Skin Types

FOR BEST RESULTS

Apply after serum and before facial moisturizer. Pump a small amount onto fingertip. Gently spread around eye area, focusing on lid, brow bone, under eye and creases.

Please do not apply directly to your eye and only on the surrounding area.

KEY INGREDIENTS

Cucumber Distillate

CoQ10

Damas Rose Plant Cells

Sweet Iris Plant Cells

Larch Tree Plant Cells



ANTI-AGING EYE CREAM

FULL INGREDIENT LIST

Serum blend (*aloe vera juice, *squalane [plant sugar derived], carrageenan [chondrus crispus], non-GMO xanthan gum), *aloe vera juice, *aloe vera juice infused with herbs (*gotu kola, *life everlasting flowers, *butcher's broom, *cats claw, *chamomile flowers, *comfrey leaves, *eyebright, *gingko leaves, *goji berry, *green tea, *jasmine flowers, *licorice root, *milk thistle seed, *sarsaparilla root, *st. john's wort), butter blend (*coconut oil, *aloe vera oil, *avocado oil, *mango seed butter, *beeswax), *shea oil, herb infused oil (*jojoba oil, *sesame seed oil, *calendula flowers, *comfrey leaves, *comfrey root, *echinacea purpurea, *ginko leaves, *goji berries, *gotu kola leaves, *hibiscus flowers, *lavender flowers, *lemon balm, *licorice root, *life everlasting flowers, *lotus stamen, *plantago leaves, *rhodiola, *rooibos, *rose petals, *rosemary leaves, *green tea leaves, *shavegrass (horsetail herb), *violet leaves, *acai fruit, *amla, *ashwagandha, *frankincense, *milk thistle seed), *cucumber extract, non-GMO vitamin E tocopherols, CoQ10 & *squalane [plant sugar derived], 100% non-GMO plant derived wax (no solvents, no preservatives), aspen bark extract, *rosehip seed oil, *castor seed oil, cranberry seed oil, *carrot seed oil, red raspberry seed oil, *tamanu oil, damas rose cells, larch cells, sweet iris cells, *acai oil, superoxide dismutase, CO2 extract of sea buckthorn berry, *jasmine sambac absolute.
**Organically grown or wildcrafted*



ANTI-AGING EYE CREAM

Overview of Eye Cream

The skin around the eyes is much thinner than anywhere else on the face. There are minimal oil glands, which makes the eye area more prone to dryness, causing pronounced fine lines over time. The eyes can easily be stressed or strained due to certain facial expressions made or by squinting, which can accelerate signs of aging around the eyes.

Using active plant cells allows us to increase the potency of our skin care. We use a total of 150 million active plant cells per small batch of our Anti-Aging Eye Cream. These plant cells are comprised of phytoalexins (active molecules), polypeptides, proteins, lipids, fatty acids, sterols, sugars, vitamins, enzymes and amino acids. All of these elements supply essential nutrients to strengthen the skin's integrity. Because eye creams are concentrated products, other areas of the face (around the lips, neck or décolleté) can also benefit from eye cream application.

The benefits of using Anti-Aging Eye Cream include:

- Eases temporary puffiness
- Enhances the look of the skin's texture and quality
- Protects the skin from environmental stressors
- Soothes and calms



EXFOLIANTS & MASKS



Ayurvedic Facial Scrub

Dry Herb Exfoliant

This fragrant Indian herbal treatment with horsetail and fenugreek seeds exfoliates and softens. Mineral-rich Rhassoul clay from the Atlas Mountains of Morocco absorbs excess oil. This gentle but powerful treatment leaves skin revitalized, fresh and alive.



50 ML Approximately 30 applications per jar.

EXPIRES 3 YEARS AFTER FORMULATION

Product Details

SUITABLE FOR

All Skin Types, Including Sensitive Skin

FOR BEST RESULTS

Combine 1 teaspoon with a few drops of water in palm of hand. Mix to form a paste. For a richer scrub, blend with 1 to 2 pumps of cleanser. Gently massage paste onto face and neck. Wipe clean with a wet, warm towel. Follow with your favorite serum and/or moisturizer. Use as needed, 2 to 4 times a week.

KEY INGREDIENTS

Moroccan Rhassoul Clay

Fenugreek

Rosemary

Shavegrass (Horsetail)

AYURVEDIC FACIAL SCRUB

FULL INGREDIENT LIST

*Fenugreek seed powder, *lavender flower powder,
*Moroccan rhassoul clay, *rosemary leaf powder,
*lemon balm leaf powder, *shavegrass (horsetail
herb) powder, *neem leaf powder, *aloe vera
powder, *comfrey root powder, *lemon peel powder.
**Organically grown or wildcrafted*

AYURVEDIC FACIAL SCRUB

Kaolin Micro Exfoliant

Cream Exfoliating Facial Scrub

Cleanse and detoxify your skin with re-mineralizing green kaolin clay. Diatomaceous earth promotes a smooth, soft texture and creates a rich exfoliant that replenishes minerals, stimulates and removes impurities. This revitalizing treatment leaves skin polished, flawless and restored.



120 ML Lasts approximately 3-4 months, depending how often exfoliation is performed.

EXPIRES 2.5 YEARS AFTER FORMULATION

Product Details

SUITABLE FOR

All Skin Types, Excluding Sensitive Skin

FOR BEST RESULTS

As a scrub, apply in AM to damp face and neck. Massage gently in small upward circles. Rinse. Use 3-4 times a week.

KEY INGREDIENTS

Green Kaolin Clay
Diatomaceous Earth
Lavender Essential Oil
Shavegrass (Horsetail)



KAOLIN MICRO EXFOLIANT

FULL INGREDIENT LIST

*Aloe vera juice, *coconut oil, saponified oils (coconut oil and plant starches/sugars), *vegetable glycerin, *diatomaceous earth (silica crystals), *green kaolin clay, aspen bark extract, green tea leaf extract, essential oils of lavender, sage and lemongrass, non-GMO xanthan gum. *Organically grown or wildcrafted

**Organically grown or wildcrafted*

KAOLIN MICRO EXFOLIANT

Coconut Honey Mask

Nourishing Face & Body Mask

Nourish your skin with this unique, vitamin-rich mask formulated with pure Colorado mountain wildflower honey. Live enzymes and amino acids keeping skin looking smooth and plump. Coconut oil, high in lauric acid, soothes sensitive skin.



50 ML Approximately 30 applications per jar.

EXPIRES 2.5 YEARS AFTER FORMULATION

Product Details

SUITABLE FOR

Dry, Mature, and Sensitive Skin

FOR BEST RESULTS

Apply mask generously to clean skin. Leave on for 15 minutes or longer. Remove with a wet towel. Pat dry. For a spa-like experience and optimal results, before applying mask, open pores in bath or shower, or with a warm towel. For best results, use once or twice a week.

KEY INGREDIENTS

Mountain Wildflower Honey
Extra Virgin Coconut Oil



COCONUT HONEY MASK

FULL INGREDIENT LIST

*Mountain wildflower honey, *extra virgin coconut oil,
*beeswax, *vanilla extract. **Organically grown or wildcrafted*

COCONUT HONEY MASK



Illuminating Pearl Mask

Hydrating & Brightening Treatment

This luxurious mask restores balance and harmony while creating the perfect beautifying ritual. Honey delivers complex nutrients and hydrating properties to visibly improve tone and radiance. Turmeric's bioactive compounds leave your skin feeling calm, making this mask ideal for sensitivities. Skin brightening pearl powder enhanced with uva ursi and licorice transforms your complexion to have an everlasting glow.



50 ML Approximately 30 applications per jar.

EXPIRES 2.5 YEARS AFTER FORMULATION

Product Details

SUITABLE FOR

All Skin Types

FOR BEST RESULTS

Apply mask generously to clean skin. Leave on for 15 minutes or longer. Remove with a wet towel. Pat dry. For a spa-like experience and optimal results, before applying mask, open pores in bath or shower, or with a warm towel. For best results, use once or twice a week.

KEY INGREDIENTS

Pearl

Mountain Wildflower Honey

Licorice & Uva Ursi

Turmeric

ILLUMINATING PEARL MASK

FULL INGREDIENT LIST

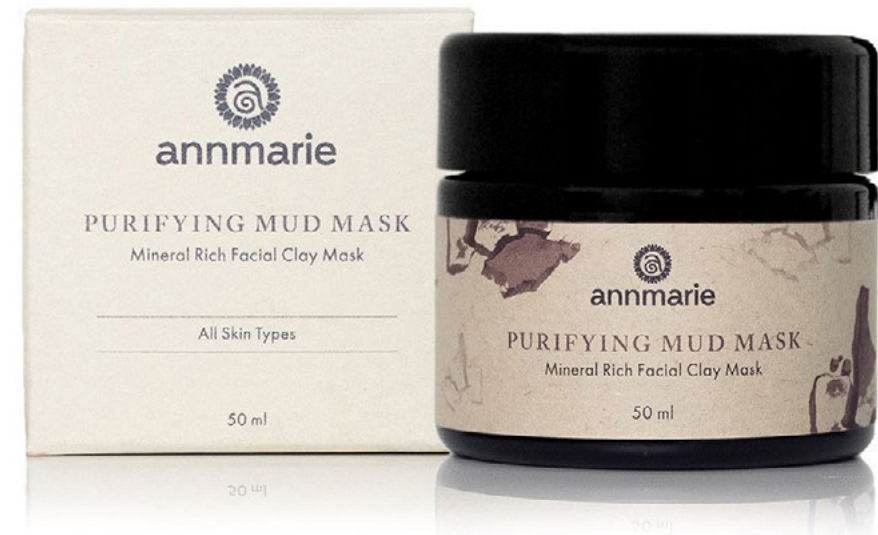
Aloe vera juice*; honey*; pearl powder*; glycerin*; uva ursi extract*, licorice root extract*, amla fruit extract*; aspen bark extract; squalane [plant sugar derived]; saccharide isomerate; green mandarin oil; lavender oil*; sacred frankincense resin extract; turmeric root oil*; xanthan gum; carrageenan [chondrus crispus]; citric acid. **Organically grown or wildcrafted*

ILLUMINATING PEARL MASK

Purifying Mud Mask

Mineral Rich Facial Clay Mask

Firm and tighten the look of your skin naturally with this powder-to-paste clay mask. Rhassoul clay, exclusive to the Atlas Mountains of Morocco, is rich in the minerals silica and magnesium. Chlorella algae provide phytonutrients, while rose clay absorbs excess oil. Each use will leave your skin feeling renewed and fresh.



50 ML Approximately 30 applications per jar.

EXPIRES 3 YEARS AFTER FORMULATION

Product Details

SUITABLE FOR

All Skin Types

FOR BEST RESULTS

Apply after serum and before facial moisturizer. Pump a small amount onto fingertip. Gently spread around eye area, focusing on lid, brow bone, under eye and creases.

Please do not apply directly to your eye and only on the surrounding area.

KEY INGREDIENTS

Rose Clay

Moroccan Rhassoul Clay

Chlorella Algae



PURIFYING MUD MASK

FULL INGREDIENT LIST

*Rose clay, *Moroccan rhassoul clay, *chlorella algae.

**Organically grown or wildcrafted*

PURIFYING MUD MASK

Overview of Exfoliants & Masks

Exfoliants

Exfoliating is an essential step in any facial routine because it is the process of removing buildup, impurities and excess oils from the surface of the skin, while also refining the skin's texture and minimizing the appearance of enlarged pores. Exfoliation also allows for toners, serums and moisturizers to absorb more effectively into the skin.

Depending on your skin type, exfoliation should be performed 1-3x per week. If you have sensitive skin, less exfoliation is needed and if you have oily, combination or dull skin, more exfoliation is ideal.

Tip:

We recommend masking 1-3 times per week, depending on your skin type and the season.

The benefits of exfoliating include:

- Increases absorption of other skin care products
- Creates a brighter look by evening out the skin tone and texture
- Enhances skin smoothness and softness

- Decreases the appearance of fine lines and deep wrinkles

Masks

Face masks are packed with skin-loving ingredients. They are formulated with a range of benefits that hydrate, moisturize, purify, balance, tone, replenish nutrients, exfoliate, stimulate, rejuvenate and calm the skin. They truly are a pampering step to any facial routine, while supporting the skin on a deeper level.

SUN PROTECTION

Sun Love

Natural Sunscreen

BROAD SPECTRUM SPF 20

Reformulation in progress...



2 OZ Lasts approximately 2 months, with daily use.

EXPIRES 2.5 YEARS AFTER FORMULATION

Product Details

SUITABLE FOR

All Skin Types

FOR BEST RESULTS

Shake thoroughly before each use. Apply AM after moisturizer. Reapply after swim, sweat or towel drying. Recommended for face; also suitable for all over body application.

Lightly tinted formula may stain clothing.

KEY INGREDIENTS

N/A

FULL INGREDIENT LIST

N/A



SUN LOVE

Overview of Sun Protection

Most sun protection formulas list an SPF number on the label. SPF stands for “sun protection factor,” and is a measurement of protection from only UVB rays, which are the ones that cause redness and sunburn.

UVA rays are considered even more dangerous, as they penetrate skin more deeply and are linked to skin cancer. But SPF does not measure a sun protection formula against UVA rays—only UVB rays. To further explain—the SPF is the approximate measure of time a person who has applied sun protection to their skin can stay out in the sun without getting burned.

Our Sun Love has an SPF of 20. This formula is a safe and effective physical block from both UVA and UVB rays for everyday use, though it needs to be applied every hour if sitting in the sun for a prolonged period of time.

Zinc oxide, which offers superior broad spectrum protection, is not waterproof and it does wear off after a time. We also recommend additional protection like a hat, scarf or shade, if exposed to direct sun for long hours.

Overall, our Sun Love Sun Protection formula is an oil-based product that deeply moisturizes and protects the skin from premature aging, while offering antioxidant-rich oils that help shield skin from harsh elements.



BODY CARE

Rosemary Peppermint Body Wash

Invigorating Gel Cleanser

Cleanse and energize your skin with this aloe vera-based, herb-infused body wash. A pH-balanced cleanser, it contains rosemary and essential oil of peppermint combined to leave your skin feeling cool, refreshed and uplifted.



240 ML Lasts approximately 30-45 days, with daily use.

EXPIRES 2 YEARS AFTER FORMULATION

Product Details

SUITABLE FOR

All Skin Types

FOR BEST RESULTS

For daily use as a body wash in bath or shower. Gentle enough to also use on face. Pump a generous amount into hands or on washcloth, then wash and rinse.

To help increase the lathering effect, use with a body exfoliation towel or loofah.

KEY INGREDIENTS

Lemon Balm

Rosemary

Peppermint Essential Oil

ROSEMARY PEPPERMINT BODY WASH

FULL INGREDIENT LIST

*Aloe vera juice, saponified oils (coconut oil and plant starches/sugars), *aloe vera juice infused with herbs (*calendula flowers, *comfrey leaves, *life everlasting flowers, *lavender flowers, *lemon balm leaves, *neem leaves, *plantago leaves, *rosemary leaves, *olive leaves), *vegetable glycerin, aspen bark extract, essential oils of rosemary and peppermint, non-GMO xanthan gum, *rosemary extract. **Organically grown or wildcrafted*

ROSEMARY PEPPERMINT BODY WASH

Coconut Body Oil

Herb-Infused Moisturizer

Nourish and soften your skin daily with a unique blend of oils infused with nutrient-rich herbs—milk thistle, life everlasting and calendula. This luxurious formula is rich in lauric acid (coconut oil) and finished with the aroma of lavender. Soothes the body and eases the mind.



Available in both **100 ML** and **200 ML** sizes.

100 ML Lasts approximately 2 months, with daily use.

200 ML Lasts approximately 4 months, with daily use.

EXPIRES 2.5 YEARS AFTER FORMULATION

Product Details

SUITABLE FOR

All Skin Types

FOR BEST RESULTS

Use after shower or bath as an all over body moisturizer, or add a few drops to bath. For the ultimate massage oil, warm between palms before applying to clean skin.

May solidify at temps below 76°. Run bottle under hot water to liquify, then shake well. Or store bottle in shower.

KEY INGREDIENTS

Extra Virgin Coconut Oil

Milk Thistle Seed

Rooibos



COCONUT BODY OIL

FULL INGREDIENT LIST

*Extra virgin coconut oil, *sunflower oil, herb infused oil (*grapeseed oil, *calendula flowers, *comfrey leaves, *comfrey root, *echinacea purpurea, *gingko leaves, *goji berries, *gotu kola leaves, *hibiscus flowers, *lavender flowers, *lemon balm, *licorice root, *life everlasting flowers, *lotus stamen, *plantago leaves, *rhodiola, *rooibos, *rose petals, *rosemary leaves, *green tea leaves, *shavegrass (horsetail herb), *violet leaves, *acai fruit, *amla, *ashwagandha, *frankincense, *milk thistle seed), *aloe vera oil, *olive oil, non-GMO vitamin E tocopherols, essential oils of *lavender, elemi, peru balsam and frankincense. **Organically grown or wildcrafted*



COCONUT BODY OIL

Radiant Skin Silk

Luxurious Body Lotion

This is our richest body moisturizer, formulated for dry and dehydrated skin. Sunflower seed oil provides a protective layer of moisture, aloe vera deeply hydrates and soothes sensitivities. Essential oils of rosewood and frankincense blend perfectly to give an earthy, floral finish. Each use will leave your skin feeling hydrated, fresh and silky smooth.



Available in both **100 ML** and **200 ML** sizes.

100 ML Lasts approximately 2 months, with daily use.

200 ML Lasts approximately 4 months, with daily use.

EXPIRES 2 YEARS AFTER FORMULATION

Product Details

SUITABLE FOR

All Skin Types, Especially Dry Skin

FOR BEST RESULTS

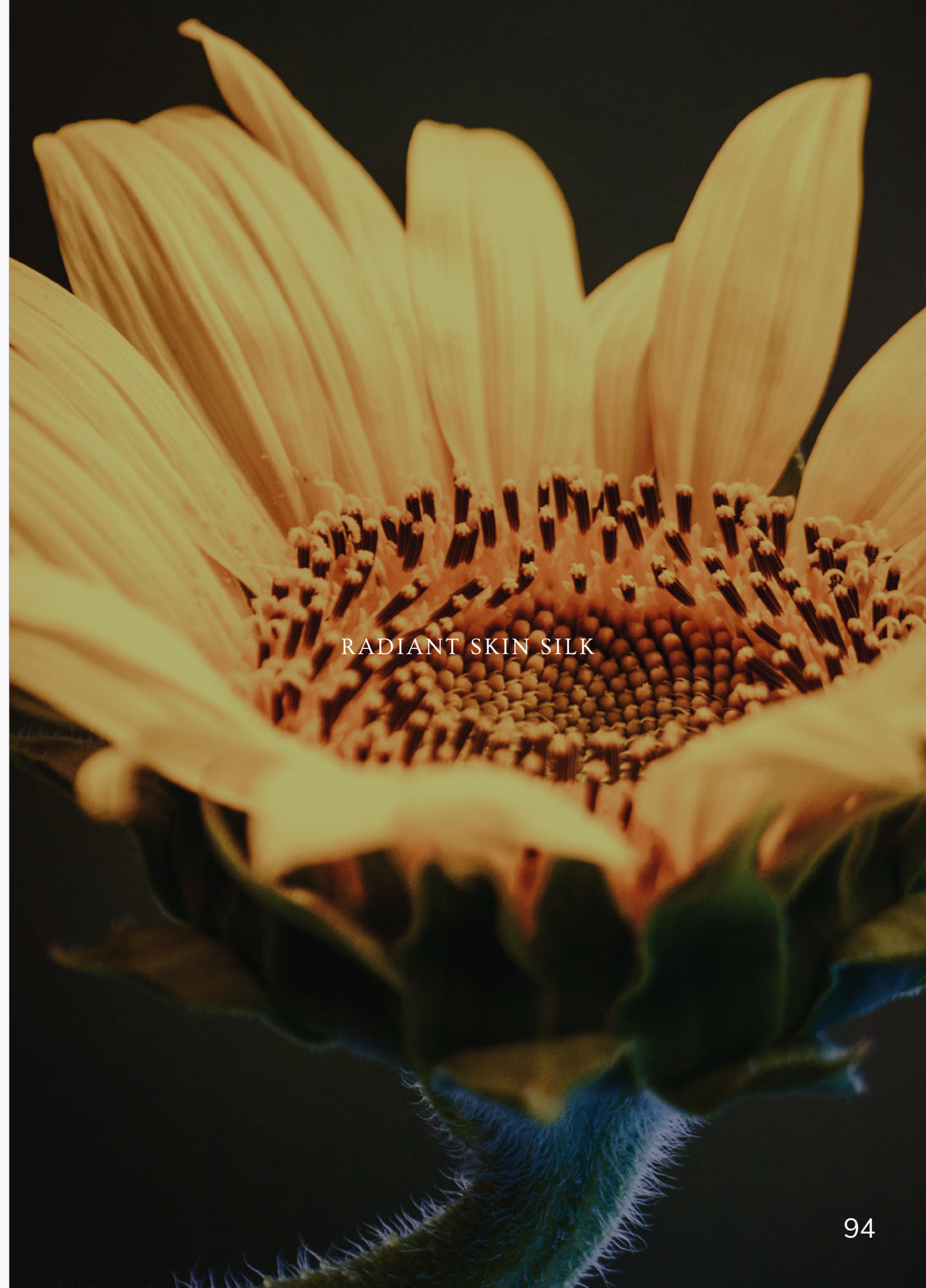
Use daily as an after bath or shower moisturizer. Dry skin types can also use on face: apply sparingly, avoiding eyes.

KEY INGREDIENTS

Sunflower Seed Oil

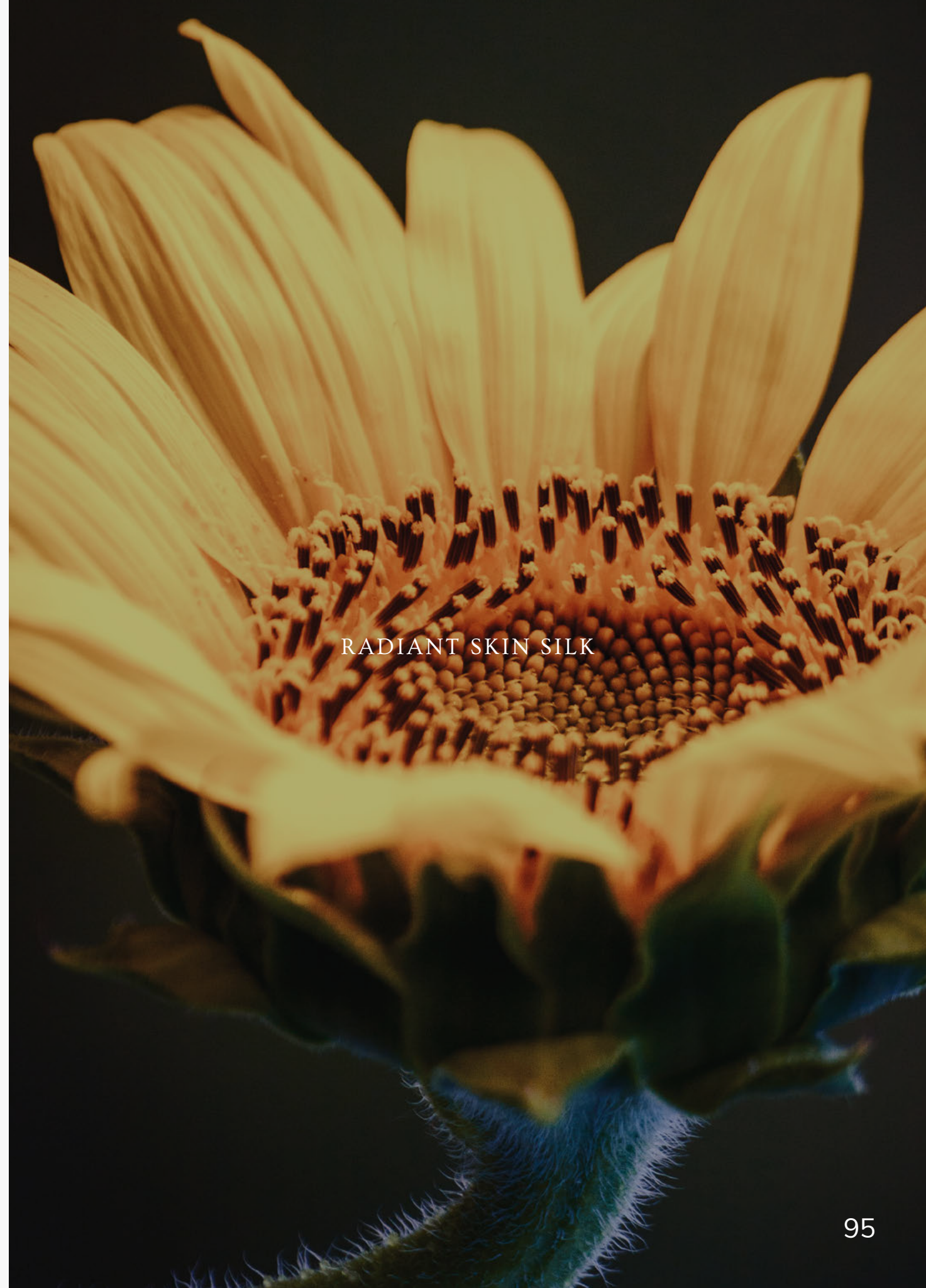
Green Tea

Chamomile



FULL INGREDIENT LIST

*Aloe vera juice, *sunflower oil, serum blend (*aloe vera juice, *squalane [plant sugar derived], carrageenan [chondrus crispus], non-GMO xanthan gum), *aloe vera juice infused with herbs (*calendula flowers, *gingko leaves, *plantago leaves, *rosemary leaves, *green tea leaves, *thyme), herb infused oil (*grapeseed oil, *calendula flowers, *chamomile flowers, *comfrey leaves, *gotu kola, *green tea leaves, *jasmine flowers, *lavender flowers, *lemon balm, *life everlasting flowers, *plantain leaves, *rhodiola root, *rosemary leaves), *sunflower seed extract, 100% non-GMO plant derived wax (no solvents, no preservatives), aspen bark extract, *plantago extract, non-GMO vitamin E tocopherols, sodium ascorbate, essential oils of rosewood and frankincense. **Organically grown or wildcrafted*



RADIANT SKIN SILK

Overview of Body Care

The skin is the body's largest organ, and just like skin on our faces, the skin on our body can experience sensitivity, dryness and roughness. Because our skin is the last to receive nutrients from our diet, it's important that we provide topical support with nutrient-dense body care products! Consistent body care will slow signs of aging on areas that tend to get more elemental exposure: hands, neck, chest and shoulders.

Rosemary Peppermint Body Wash

This body wash closely resembles the Citrus Mint Cleanser formula (with the exception of the Witch Hazel Distillate and a different blend of essential oils). For those with oily and blemish-prone skin, this wash can be used on the face in addition to the body.

To help increase the lathering effect, use with a body exfoliation towel or loofah.

Coconut Body Oil

This is made using Extra Virgin Coconut Oil which is ideal for dry skin types.

Coconut oil may solidify at temperatures below 76°, which can impact the performance of the body oil pump. To avoid this, run bottle under hot water to liquify, then shake well. Our body oil may also be kept stored in the shower to help its consistency remain liquified.

Radiant Skin Silk

This is an effective body moisturizer for dehydrated skin types because it is formulated with our hydrating serum blend. Squalane, an effective emollient in our serum blend, provides optimal spreadability and aids in the absorption of other ingredients. It instantly hydrates the skin by locking in essential moisture.

If layering both body products, use Radiant Skin Silk first, which has a low molecular weight, then follow with Coconut Body Oil, which has a high molecular weight.

A close-up, high-angle photograph of a person's lips. The lips are coated with a highly reflective, glossy lipstick in a warm, reddish-orange shade. The texture of the lips and the sheen of the lipstick are clearly visible. The background is a soft, out-of-focus skin tone. The text "LIP CARE" is centered over the lower part of the lips.

LIP CARE

Antioxidant Lip Balm

This creamy, all-natural balm moisturizes and fortifies both pucker and pout. Organic cocoa butter softens lips while antioxidant-rich, omega-heavy fruit oils of buriti and sea buckthorn fight free radicals. Rich cacao extract leaves kisses luminous and luscious—with a hint of chocolate.



Product Details

SUITABLE FOR

All Skin Types

FOR BEST RESULTS

Use throughout the day. Apply liberally on lips or wherever dryness occurs.

KEY INGREDIENTS

Cocoa Extract

Sea Buckthorn Fruit Oil

Buriti Fruit Oil

Cocoa Butter



ANTIOXIDANT LIP BALM

FULL INGREDIENT LIST

*Olive oil, *beeswax, *cocoa butter, sea buckthorn fruit oil, *cocoa extract, buriti fruit oil, *rosehip fruit oil, *rosemary extract. **Organically grown or wildcrafted*

ANTIOXIDANT LIP BALM

Overview of Lip Care

Similar to the skin around the eyes, the lips have much thinner and more sensitive skin than anywhere else on the face. Lips have no oil glands, so they need extra moisture and protection throughout the day. If not properly moisturized, lips can get dry, chapped and even experience occasional peeling.



WILD ALCHEMY
COLLECTION



CLEANSERS

Phytonutrient Cleanser

Activated Facial Cream Cleanser

Elevate your cleansing experience with this lavish concoction of nutrient dense herbs and moisture-binding mango seed butter. Apple extract, with its potent brightening properties, gently softens and renews the look of the skin. Combined with our unique signature serum blend, this cleanser delivers essential hydration for a calm and more restored complexion. Finished with lavender, lemon, bergamot and litsea cubeba, your senses are uplifted and alive.



100 ML Lasts approximately 4 months, with daily use.

EXPIRES 2.5 YEARS AFTER FORMULATION

Product Details

SUITABLE FOR

All Skin Types, Including Dry, Mature,
and Sensitive Skin

FOR BEST RESULTS

Use AM/PM. Apply to damp skin,
massage into face, rinse. For a more
therapeutic experience, apply to dry skin
first and massage for 1-2 minutes, then
rinse.

KEY INGREDIENTS

Coconut Oil

Mango Seed Butter

Apple Extract

Acai Oil

PHYTONUTRIENT CLEANSER



FULL INGREDIENT LIST

*Aloe vera juice, saponified oils (coconut oil and plant starches/sugars), *coconut oil, *vegetable glycerin, serum blend (*aloe vera juice, carrageenan [chondrus crispus], *squalane [plant sugar derived], *saccharide isomerate, non-GMO xanthan gum), *apple extract, *aloe vera juice infused with herbs (*calendula flowers, *chamomile flowers, *life everlasting flowers, *lavender flowers, *rose petals), *mango seed butter, aspen bark extract, *tamanu oil, *acai oil, essential oils of lavender, lemon, bergamot and litsea cubeba, *rosemary extract, non-GMO xanthan gum. **Organically grown or wildcrafted*

PHYTONUTRIENT CLEANSER



A close-up photograph of a cedar branch with water droplets, serving as a background for the text. The image is dark and moody, with the green of the needles and the brown of the branch visible. The water droplets are in sharp focus, reflecting light. The text "TONING MISTS" is centered in a gold, serif font.

TONING MISTS

Botanical Hydration Mist with Immortelle

Awakening Face & Body Mist

Uplift and beautify with this timeless blend of botanical hydrosols, formulated to awaken skin with instant hydration and a veil of antioxidants. Anchored by the anti-aging prowess of Immortelle and blended with chamomile and frankincense, this divine Wild Alchemy elixir settles beautifully to reveal a calm, tightened complexion. It is finished with a hint of rose for radiant, refreshed skin.



100 ML Lasts approximately 6 months, with daily use.

EXPIRES 1.5 YEARS AFTER FORMULATION

Product Details

SUITABLE FOR

All Skin Types, Including Oily, Aging,
or Sensitive Skin

FOR BEST RESULTS

Use AM/PM. After cleansing, lightly mist
over face and neck. Let dry. Follow with
the serum and/or moisturizer best suited
to your skin type.

KEY INGREDIENTS

Helichrysum
Chamomile
Rose
Frankincense

A close-up photograph of several clusters of bright yellow Helichrysum flowers. The flowers are small and numerous, arranged in dense, rounded heads. The background is a soft, out-of-focus green, suggesting the foliage of the plant. The lighting is natural, highlighting the texture of the petals and the overall vibrant color of the blooms.

BOTANICAL HYDRATION MIST
WITH IMMORTELLE



FULL INGREDIENT LIST

*Life everlasting flowers distillate, *german chamomile distillate, *frankincense distillate, *rose distillate, aspen bark extract. **Organically grown or wildcrafted*

BOTANICAL HYDRATION MIST
WITH IMMORTELLE



SERUMS

Wild Fruit Serum

Brightening Facial Complex

The ultimate skin elixir—this serum brightens, hydrates, and helps tone aging skin. Brightens the appearance of skin tone with a concentrated dose of fruit, herb and plant-cell extracts. A dynamic blend of Kakadu plum and apple helps revive dull skin. Resveratrol-rich knotweed, plant-cell extracts and copper combine to help keep skin moist, plump and supple for an overall even-toned, luminous glow.



15 ML Lasts approximately 30-45 days, with daily use.

EXPIRES 1.5 YEARS AFTER FORMULATION

Product Details

SUITABLE FOR

All Skin Types, Including Dry, Mature, and Sensitive Skin

FOR BEST RESULTS

Use AM/PM. Apply to damp skin, massage into face, rinse. For a more therapeutic experience, apply to dry skin first and massage for 1-2 minutes, then rinse.

KEY INGREDIENTS

Kakadu Plum Extract
Apple Extract
Knotweed Extract
Plant Cells of Madonna Lily
& Poet's Narcissus
Copper Infused Water



WILD FRUIT SERUM

FULL INGREDIENT LIST

“Serum blend (*aloe vera juice, *squalane [plant sugar derived], carrageenan [chondrus crispus], saccharide isomerate, non-GMO xanthan gum), copper infused water, saccharide isomerate, *apple extract, *uva ursi extract, *knotweed extract, CoQ10 & *squalane [plant sugar derived], *kakadu plum extract, *aloe vera juice infused with herbs (*gotu kola, *calendula, *helichrysum), aspen bark extract, madonna lily cells, poet’s narcissus cells, *sandalwood seed oil, *grapeseed oil, *camellia seed oil, *pomegranate seed oil, sodium ascorbate, *acai oil, *argan oil, superoxide dismutase, CO2 extract of *rosemary, essential oils of elemi, litsea cubeba, and roman chamomile. **Organically grown or wildcrafted*

WILD FRUIT SERUM



BODY CARE

Palo Santo Body Butter

Rich & Decadent Body Treatment

Indulge in a luxurious body treatment created to enhance your senses and enrich your skin. This exquisitely nourishing formula combines shea butter and cocoa butter to naturally soften skin, and oils like jojoba, kukui nut and macadamia for optimal, concentrated moisture. Finished with hand selected essential oils—palo santo, cardamom, vetiver and nutmeg—to warm your soul. This thick, luscious creation melts into skin and absorbs easily without feeling oily or greasy.



Product Details

SUITABLE FOR

All Skin Types

FOR BEST RESULTS

Massage and smooth into skin for the ultimate aromatherapeutic experience. Apply as little or as much as needed.

KEY INGREDIENTS

Cardamom
Shea Butter
Cocoa Butter
Palo Santo



PALO SANTO BODY BUTTER



FULL INGREDIENT LIST

*Shea nut butter, *cocoa butter, *extra virgin coconut oil, kukui nut oil, *macadamia nut oil, *jojoba nut oil, essential oils of palo santo, cardamom, vetiver, peru balsam, *nutmeg, pink pepper. **Organically grown or wildcrafted*

PALO SANTO BODY BUTTER

Overview of Wild Alchemy Collection

The intention behind the Wild Alchemy Collection is to add a touch of luxury to our existing signature line, using exotic ingredients sourced from around the globe. The result: synergistic, supercharged products with focused refinement that transforms your skin.

What Makes It Luxury?

This specialty collection is a culmination of our experiments and our experience—not only with organic, biocompatible formulas designed in-house, but also with the worldwide growers who harvest the nutrient-dense ingredients we enhance. Each ingredient is chosen not only for its individual high-performance properties and kinship to environment and community, but also for its synergy with other plants.

What Makes It Wild?

Because of their unique qualities, the individual ingredients used throughout

this collection—like kakadu plum, apple, acai and copper-infused mountain spring water—each require their own precise method of extraction and enhancement to increase their bioactivity, which allows the skin to absorb all of the nutrients to their fullest potential!

How Does Wild Fruit Serum Differ from the Signature Serums?

Overall, the unique extracts and plant cells in this serum help to enhance your natural beauty: texture, tone, firmness and radiance. Wild Fruit Serum harnesses the same qualities as both Anti-Aging Serum and Citrus Stem Cell Serum combined, delivering potent anti-aging and brightening properties to the skin, while providing deep level hydration. We refer to this serum as the “crème de la crème” of our entire serum collection.

MINERALS

BY ANNMARIE SKIN CARE

MINERALS

Multi-Purpose Foundation

BY ANNMARIE SKIN CARE

FOUNDATION

Multi-Purpose Foundation

Minerals Multi-Purpose Foundation is a non-toxic way to control coverage and customize the shade. Whether applied as a dry powder or blended with other skincare products, our multi-purpose foundation creates a smooth, even-toned complexion. The foundation comes in multiple shades, to use alone or blended to match your skin tone. Endlessly versatile, our mineral makeup can be worn as a foundation, concealer, highlighter, eye shadow, or to contour.



EXPIRES 5 YEARS AFTER FORMULATION

Product Details

SUITABLE FOR

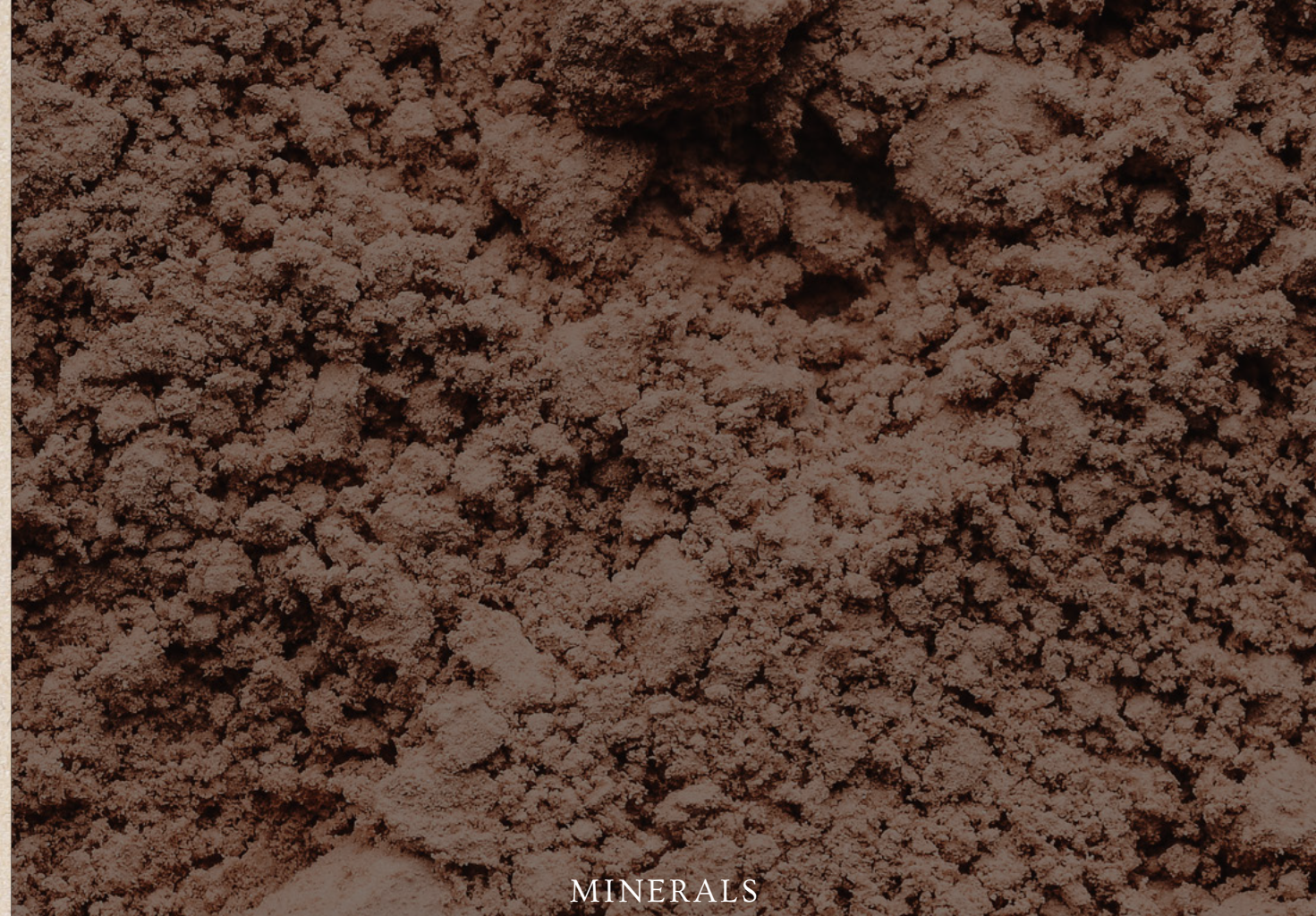
All Skin Types

FOR BEST RESULTS

Tip a small amount into palm and combine with your favorite Annmarie serum or facial oil. Blend and apply on your face, using fingers or a foundation brush. Add to Anti-Aging Eye Cream to reflect light and diminish the appearance of dark circles. To use as a highlighter/lowlighter, shadow, or bronzer—tip a small amount of powder into palm. Apply with appropriate brush and blend.

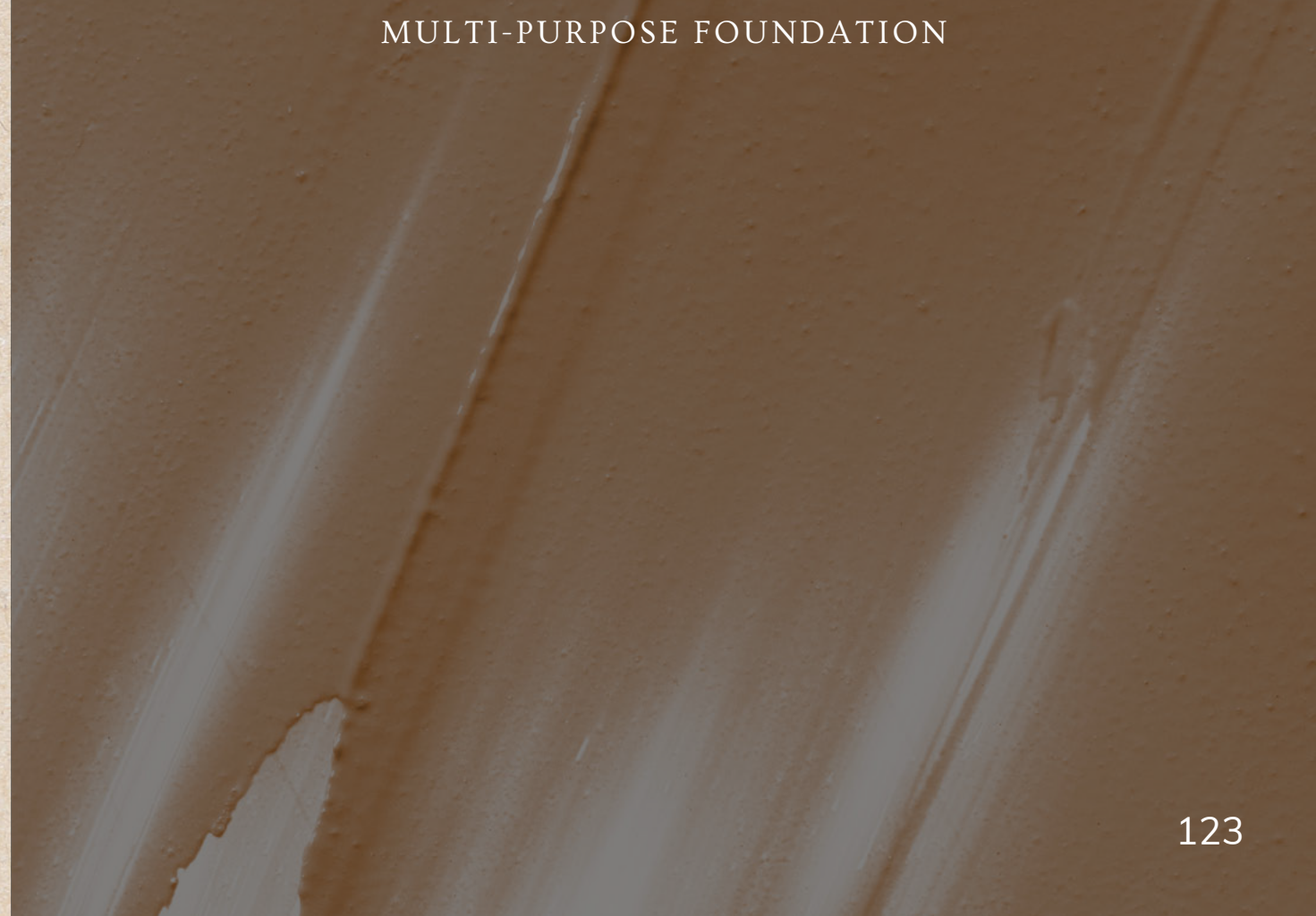
ALL INGREDIENTS

Titanium dioxide, iron oxide, mica, zinc oxide.



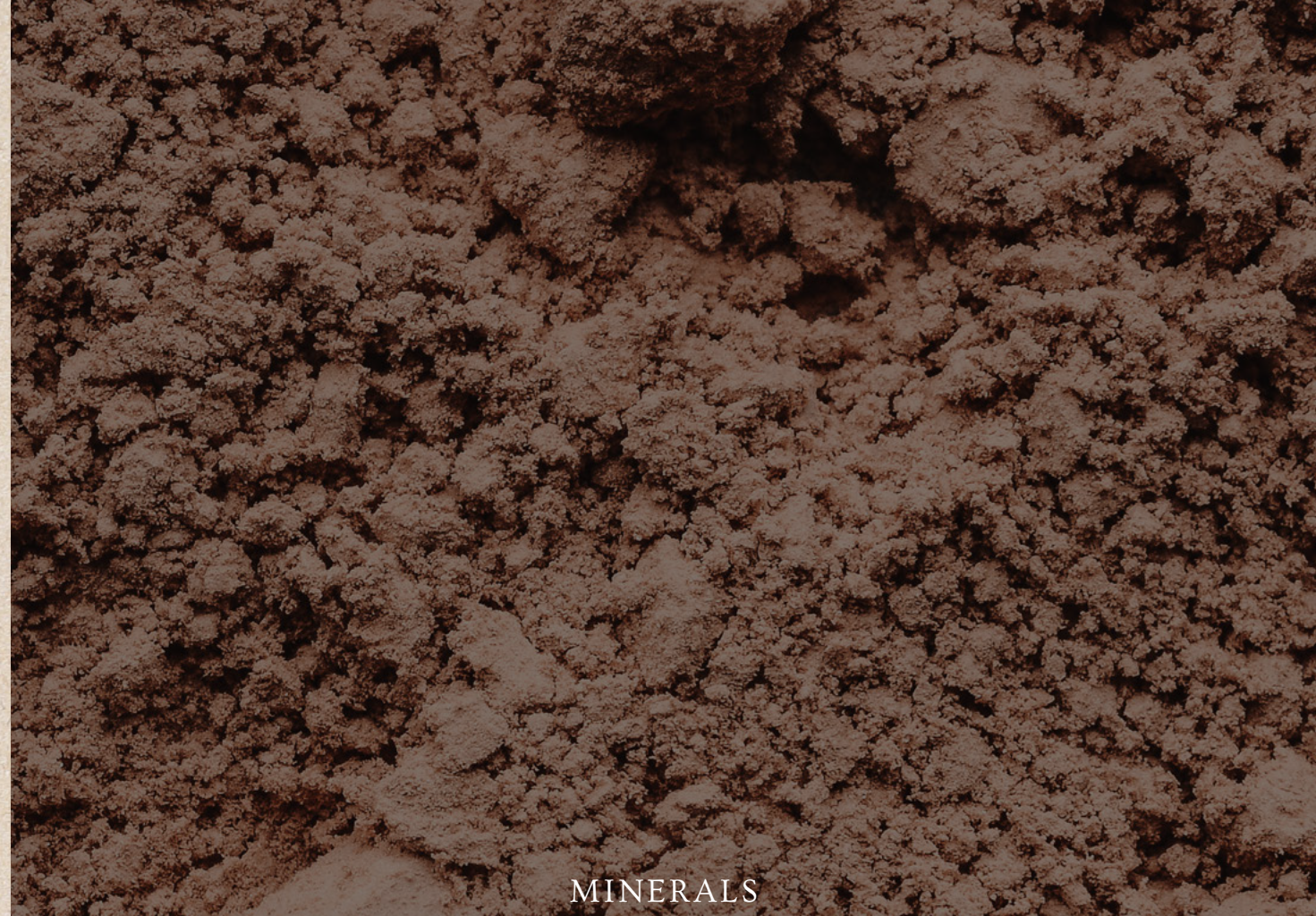
MINERALS

MULTI-PURPOSE FOUNDATION



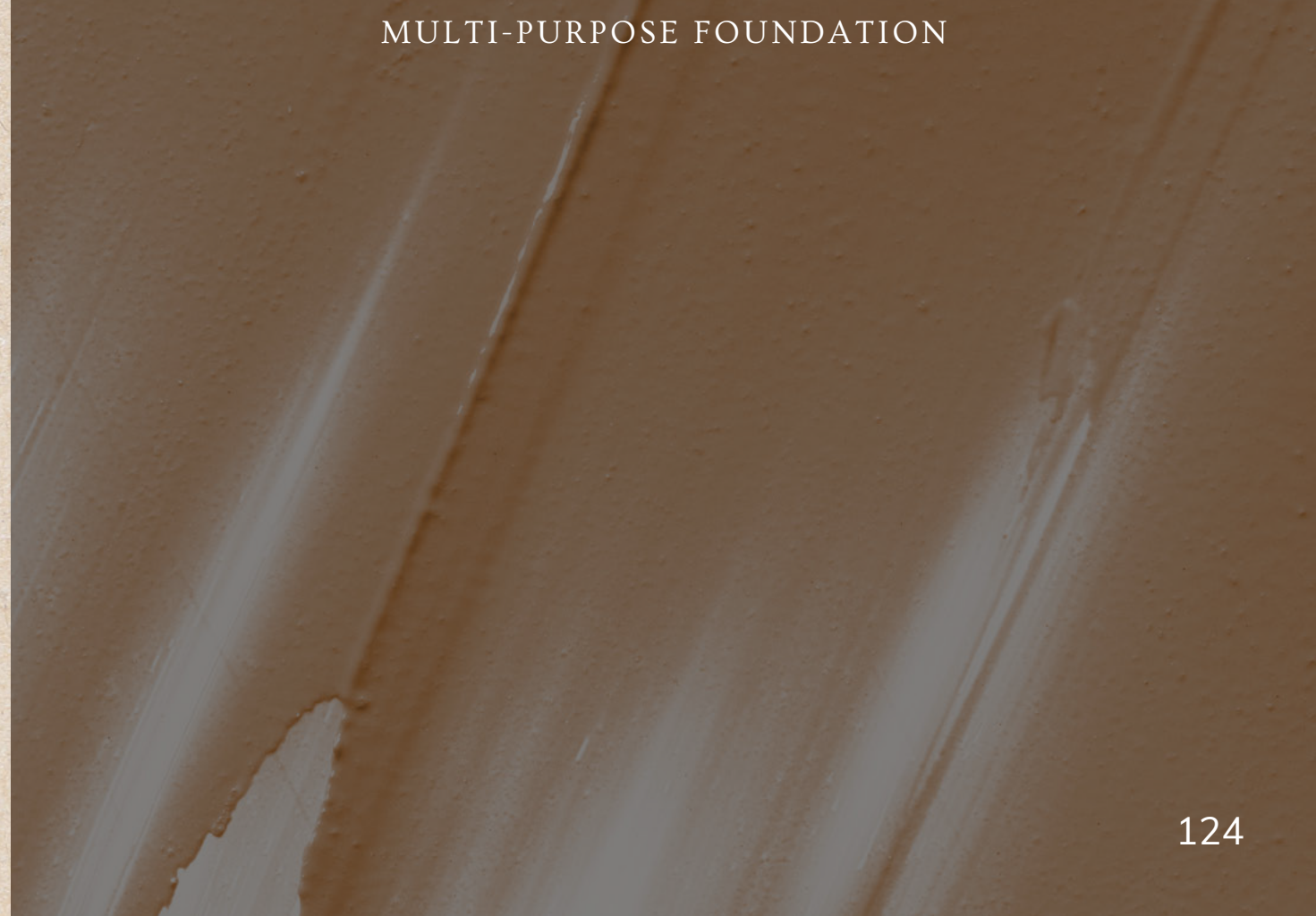
SHADES

- Pearl
For those with fair complexions with cool undertones.
- Sand
For those with light complexions with warm undertones.
- Honey
For those with light to medium complexions with warm undertones.
- Olive
For those with medium complexions with warm undertones.

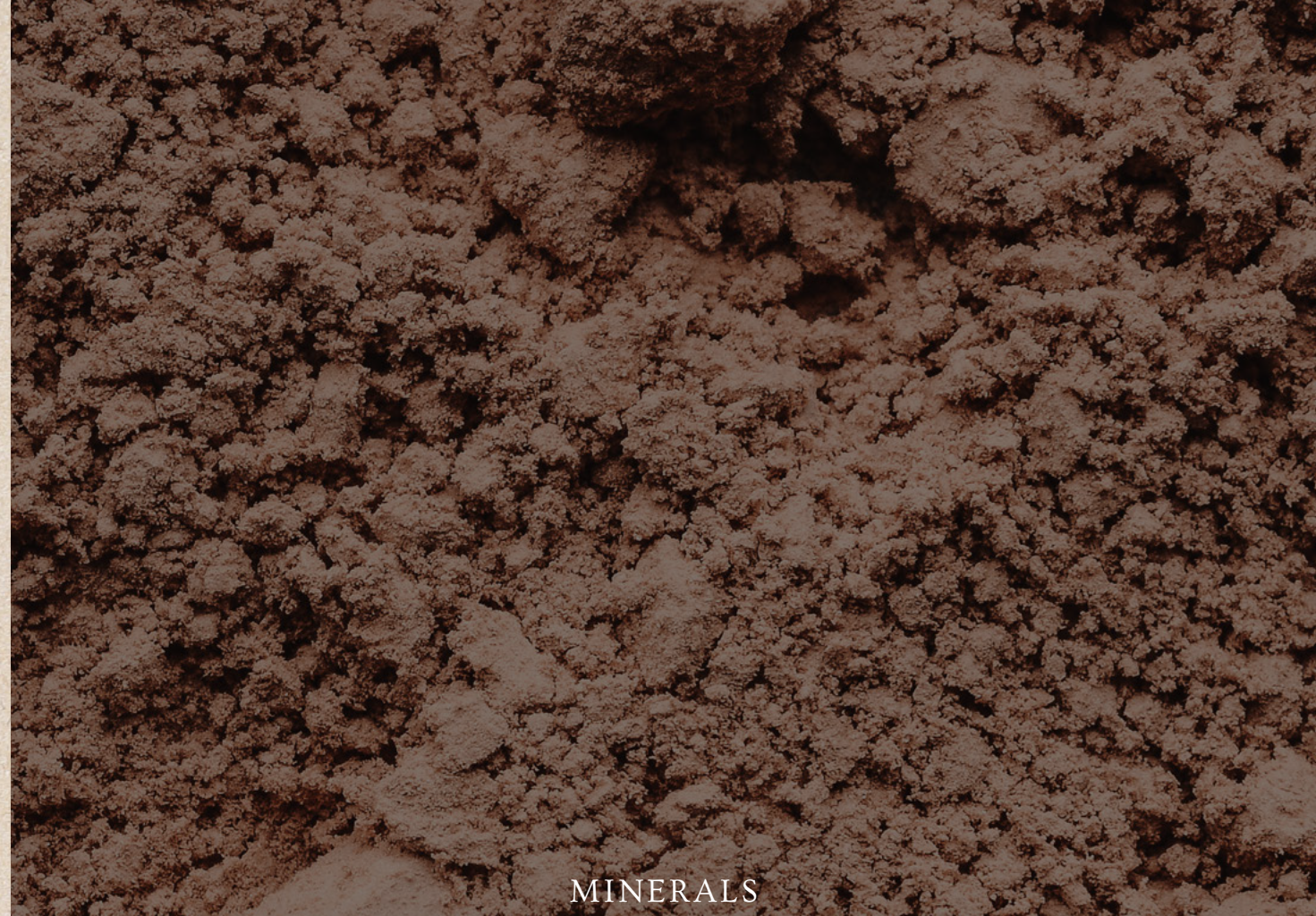


MINERALS

MULTI-PURPOSE FOUNDATION

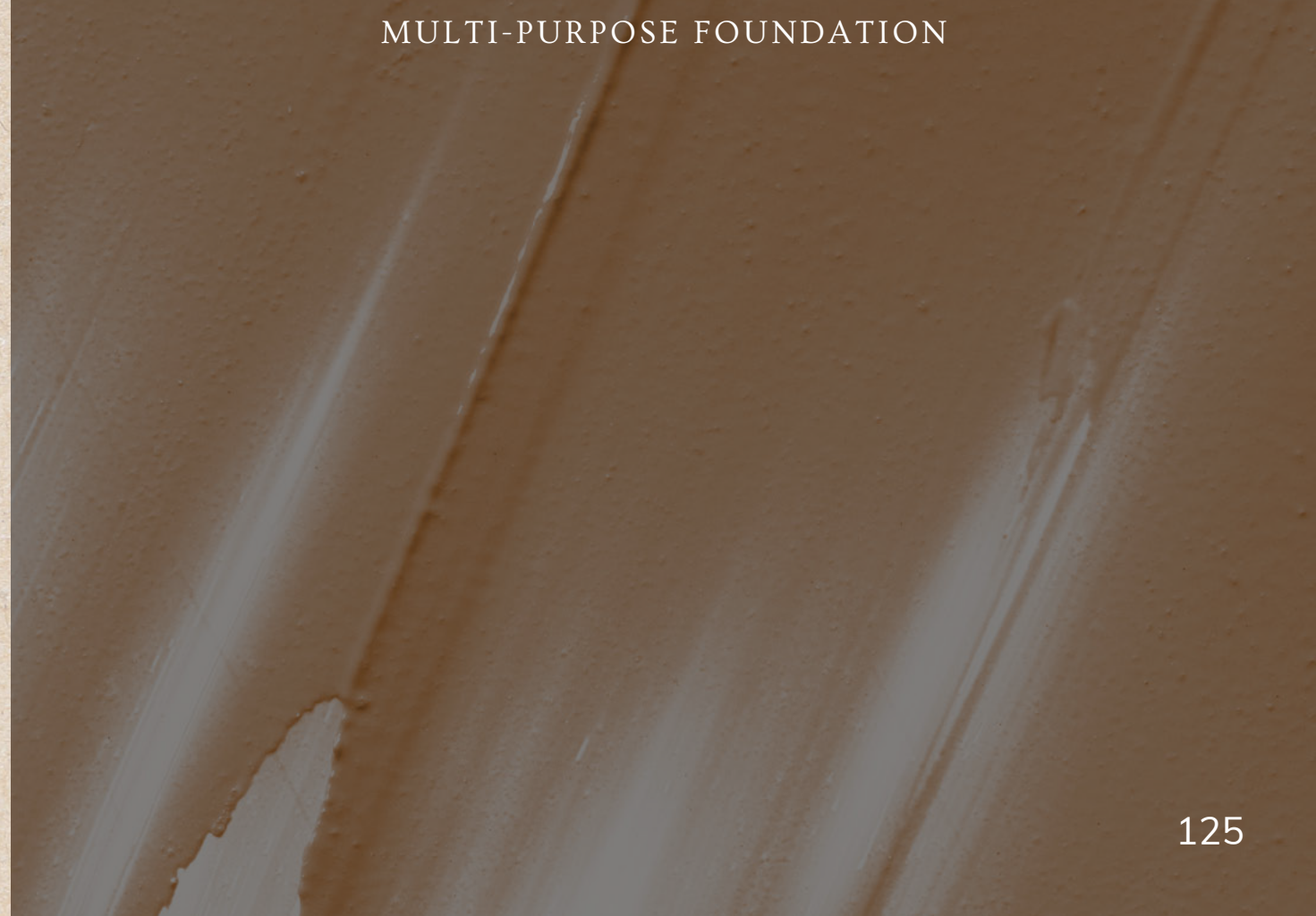


- **Nutmeg**
For those with medium complexions with neutral undertones.
- **Maple**
For those with medium-dark complexions with neutral undertones.
- **Mocha**
For those with dark complexions with cool undertones.
- **Clove**
For those with dark complexions with warm undertones.



MINERALS

MULTI-PURPOSE FOUNDATION





ESSENTIAL OILS



BLENDS

Love

A heart-opening blend of natural, sensual oils to inspire you to be your most loving self. Sweet jasmine and classic rose are balanced by sandalwood and frankincense for a scent that's nothing short of irresistible.



EXPIRES 3 YEARS AFTER FORMULATION

Product Details

SUITABLE FOR

All Skin Types

FOR BEST RESULTS

Apply 1-2 drops onto wrists, or add to a carrier oil (such as pure coconut, olive, or grapeseed) and apply like a moisturizer. Use it in your diffuser, or add it to water to make a room spray.

With all essential oils, we recommend doing a small patch test before using. Not intended for internal use.

FULL INGREDIENT LIST

*Fractionated coconut oil, essential oils [sandalwood, *Moroccan rose absolute, *jasmine sambac absolute, frankincense]. **Organically grown or wildcrafted*



Passionate

A warm and sweet essential oil blend to help you relax and awaken your sensuality. Earthy, grounding notes of vetiver and buddha wood provide a base for the passion-igniting aromas of rose and sandalwood.



EXPIRES 3 YEARS AFTER FORMULATION

Product Details

SUITABLE FOR

All Skin Types

FOR BEST RESULTS

Apply 1-2 drops onto wrists, or add to a carrier oil (such as pure coconut, olive, or grapeseed) and apply like a moisturizer. Use it in your diffuser, or add it to water to make a room spray.

With all essential oils, we recommend doing a small patch test before using. Not intended for internal use.

FULL INGREDIENT LIST

Essential oils [sandalwood, vetiver, frankincense, *Moroccan rose absolute, sweet myrrh, amyris, buddha wood]. **Organically grown or wildcrafted*



PASSIONATE

Vibrance

This light and vibrant oil blend will lift your senses with classic, romantic florals and lively notes of citrus.



EXPIRES 3 YEARS AFTER FORMULATION

Product Details

SUITABLE FOR

All Skin Types

FOR BEST RESULTS

Apply 1-2 drops onto wrists, or add to a carrier oil (such as pure coconut, olive, or grapeseed) and apply like a moisturizer. Use it in your diffuser, or add it to water to make a room spray.

With all essential oils, we recommend doing a small patch test before using. Not intended for internal use.

FULL INGREDIENT LIST

Essential oils [ruby red grapefruit, Italian lemon oil, bergamot, lemon verbena, *lavender, clementine, *jasmine sambac absolute, rose-geranium oil]. **Organically grown or wildcrafted*

VIBRANCE

Calm

Create a sacred space for yourself where you can breathe deeply and release negativity. Spruce oil lends freshness to this blend of florals, tied together with comforting frankincense for a clean and crisp scent.



EXPIRES 3 YEARS AFTER FORMULATION

Product Details

SUITABLE FOR

All Skin Types

FOR BEST RESULTS

Apply 1-2 drops onto wrists, or add to a carrier oil (such as pure coconut, olive, or grapeseed) and apply like a moisturizer. Use it in your diffuser, or add it to water to make a room spray.

With all essential oils, we recommend doing a small patch test before using. Not intended for internal use.

FULL INGREDIENT LIST

Essential oils [spruce, frankincense, rosewood, *lavender].
**Organically grown or wildcrafted*



CALM

Grounded

Find peace and clarity in this balanced blend. Woody and earthy base notes with a touch of sweetness give you a beautifully understated scent that emanates warmth and wisdom.



EXPIRES 3 YEARS AFTER FORMULATION

Product Details

SUITABLE FOR

All Skin Types

FOR BEST RESULTS

Apply 1-2 drops onto wrists, or add to a carrier oil (such as pure coconut, olive, or grapeseed) and apply like a moisturizer. Use it in your diffuser, or add it to water to make a room spray.

With all essential oils, we recommend doing a small patch test before using. Not intended for internal use.

FULL INGREDIENT LIST

Essential oils [sandalwood, amyris, peru balsam, cedarwood, vetiver, *amber, copaiba balsam, galangal root, patchouli, ginger, buddha wood, turmeric]. **Organically grown or wildcrafted*

GROUNDED



PRODUCT GUIDE

RECOMMENDED FOR YOUR SKIN TYPE

	DRY / MATURE	NORMAL & COMBINATION	OILY	SENSITIVE
CLEANSE	Aloe Herb Cleanser or Phytonutrient Cleanser	Aloe Herb Cleanser, Citrus Mint Cleanser or Phytonutrient Cleanser	Citrus Mint Cleanser	Aloe Herb Cleanser or Phytonutrient Cleanser
EXFOLIATE	Ayurvedic Facial Scrub or Kaolin Micro Exfoliant (3-4x per wk)	Ayurvedic Facial Scrub or Kaolin Micro Exfoliant (3-4x per wk)	Ayurvedic Facial Scrub or Kaolin Micro Exfoliant (3-4x per wk)	Ayurvedic Facial Scrub (1-2x per wk)
TONE (AM/PM)	Neroli Toning Mist	Neroli Toning Mist or Rosemary Toning Mist	Rosemary Toning Mist	Neroli Toning Mist
HYDRATE (AM/PM)	Anti-Aging Serum, Citrus Stem Cell Serum (for dull skin), Probiotic Serum with Tremella, or Wild Fruit Serum	Anti-Aging Serum, Citrus Stem Cell Serum (for dull skin), Probiotic Serum with Tremella, or Wild Fruit Serum	Anti-Aging Serum, Probiotic Serum with Tremella, or Wild Fruit Serum	Anti-Aging Serum, Probiotic Serum with Tremella, or Wild Fruit Serum
MOISTURIZE (AM/PM)	Anti-Aging Facial Oil or Herbal Facial Oil for Sensitive Skin	Herbal Facial Oil for Normal & Combination Skin or Herbal Facial Oil for Sensitive Skin	Herbal Facial Oil for Oily Skin	Herbal Facial Oil for Normal & Combination Skin or Herbal Facial Oil for Sensitive Skin
EYE CARE (AM/PM)	Anti-Aging Eye Cream	Anti-Aging Eye Cream	Anti-Aging Eye Cream	Anti-Aging Eye Cream
TREATMENT MASK	Coconut Honey Mask (1-2x per wk) Purifying Mud Mask (2x per mnth)	Coconut Honey Mask (1-2x per wk) Purifying Mud Mask (1-2x per wk)	Purifying Mud Mask (1-2x per wk)	Coconut Honey Mask (1-2x per wk)

Thank You!
